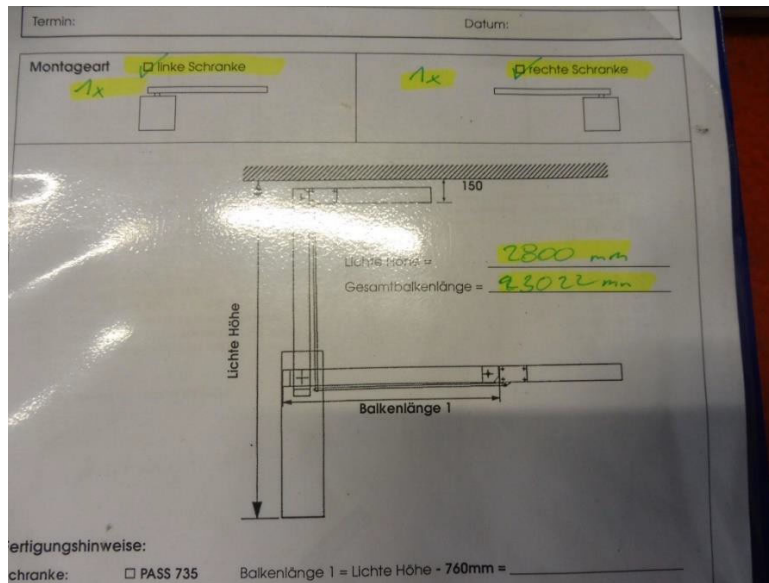
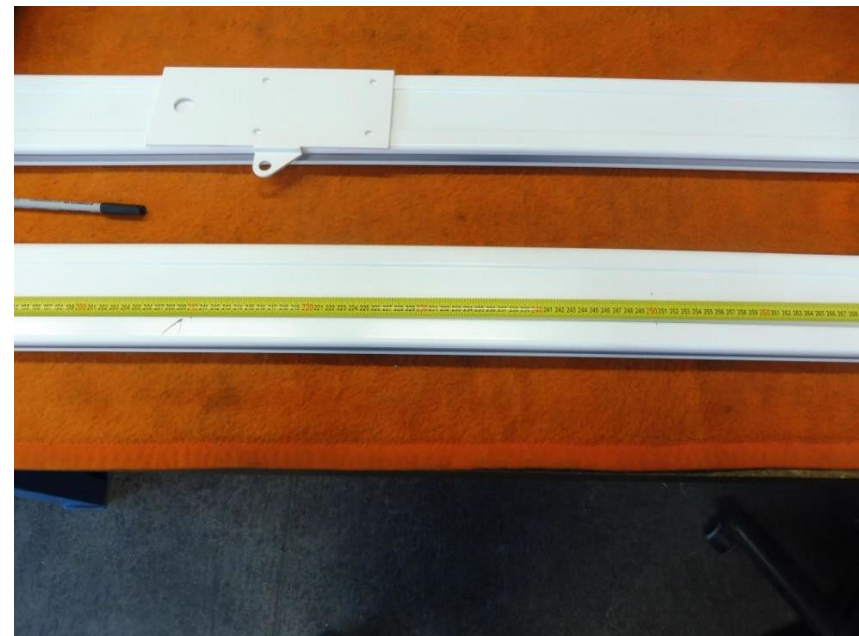
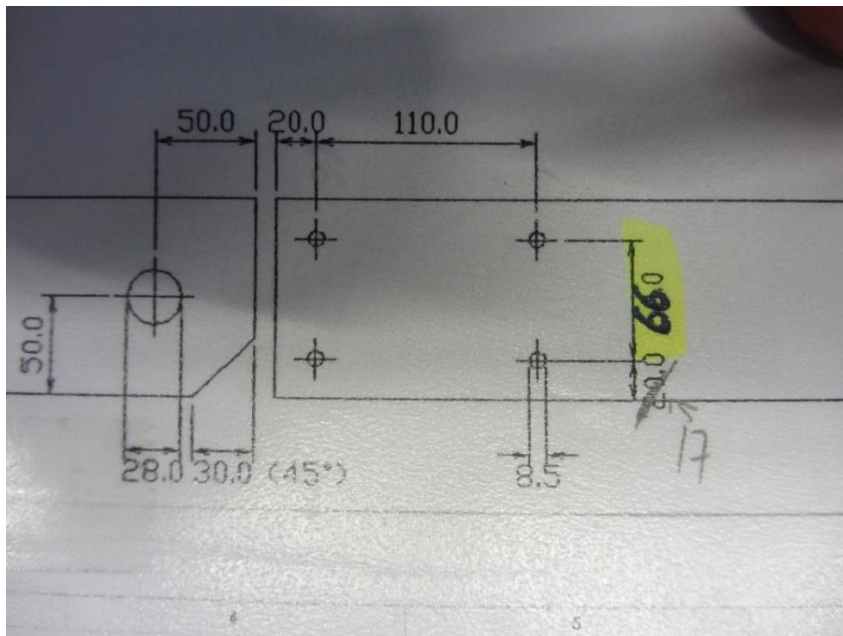


Lay the boom on a flat surface.



Take the measurements where you want to cut the boom and draw them onto the boom.



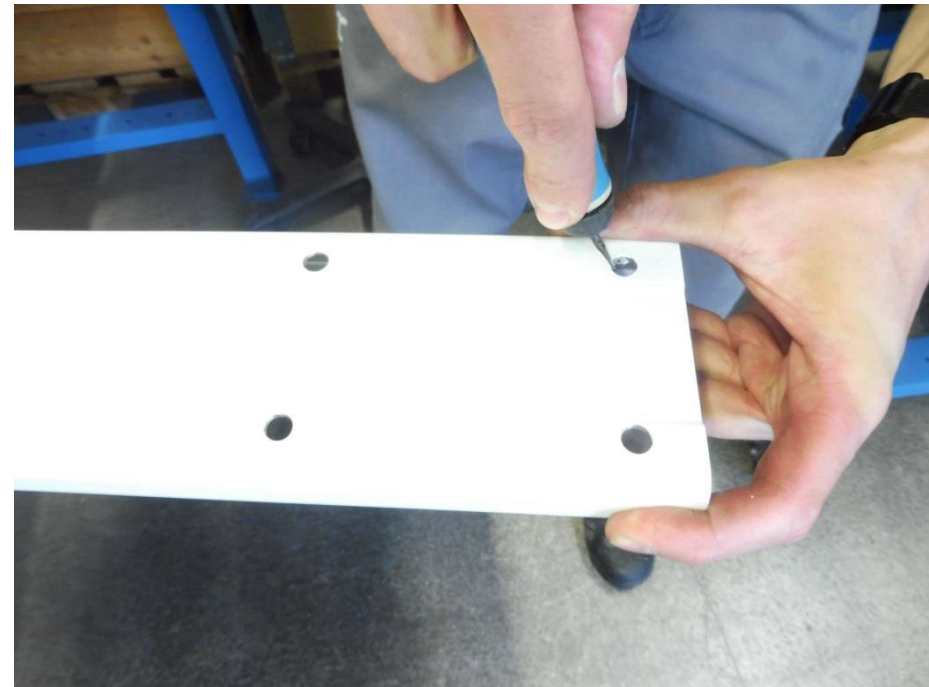
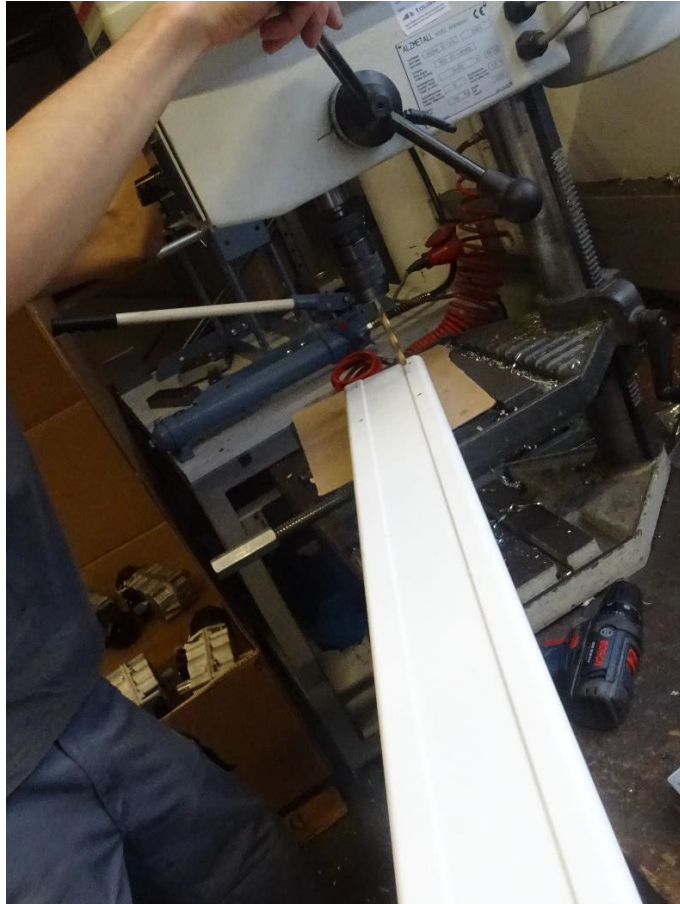
Cut the boom where you want it to be cut.
For the bend cut the boom at an angle of 45°



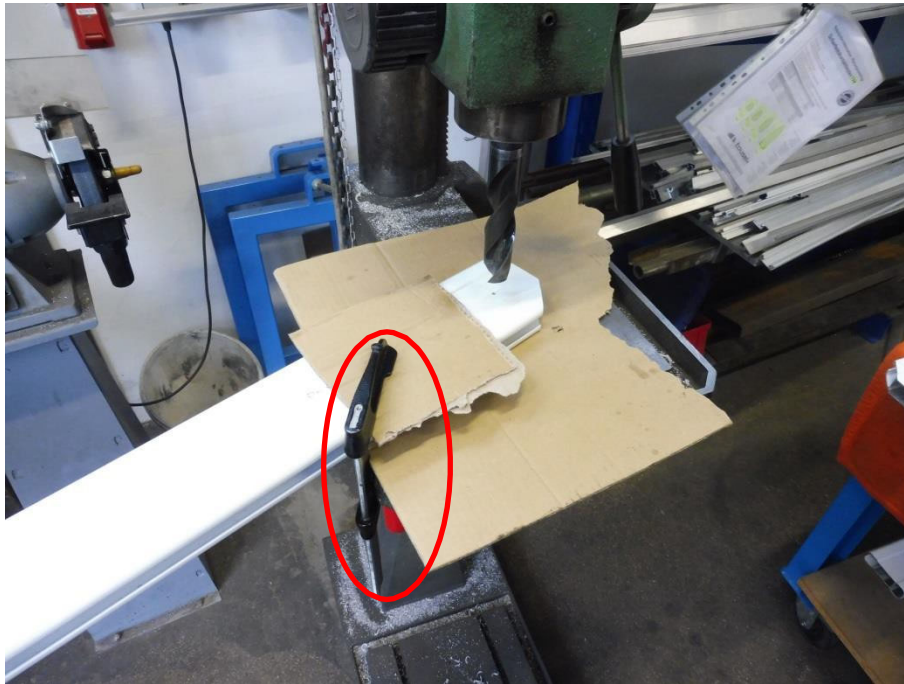
Draw the drilling holes onto the boom according to the drilling template



Drill the holes with 8,5mm drill and deburr the holes.

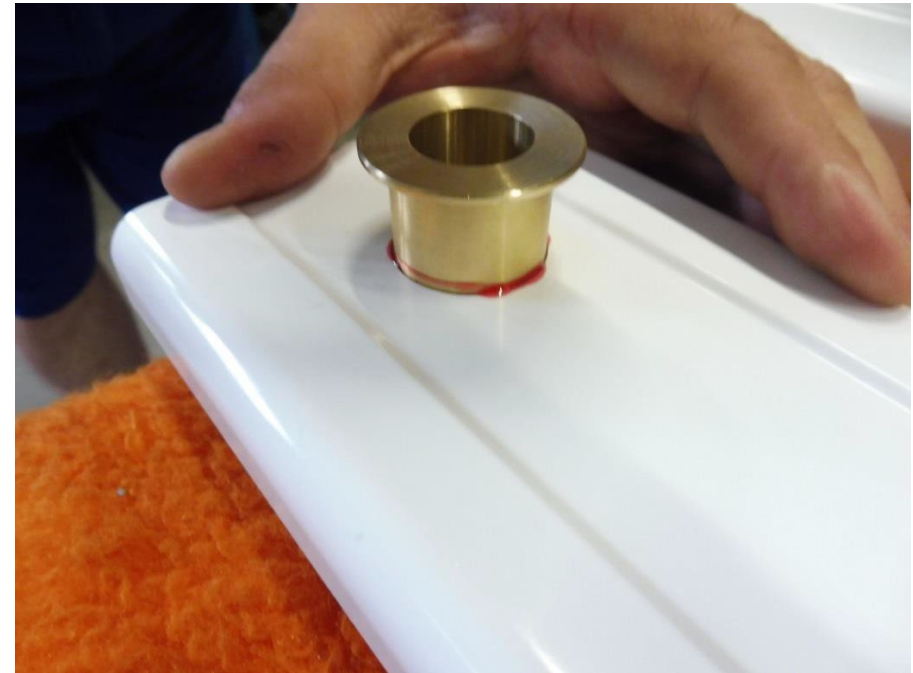
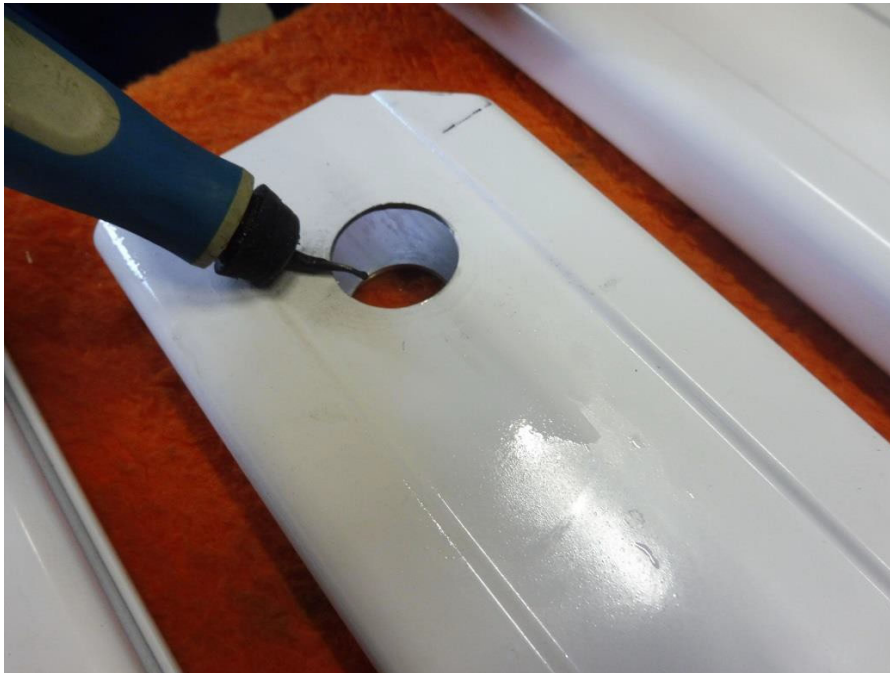


Draw according to the drilling template the hole for the Brass bushing with a 28mm drill. Fasten the boom with clamps before drilling!



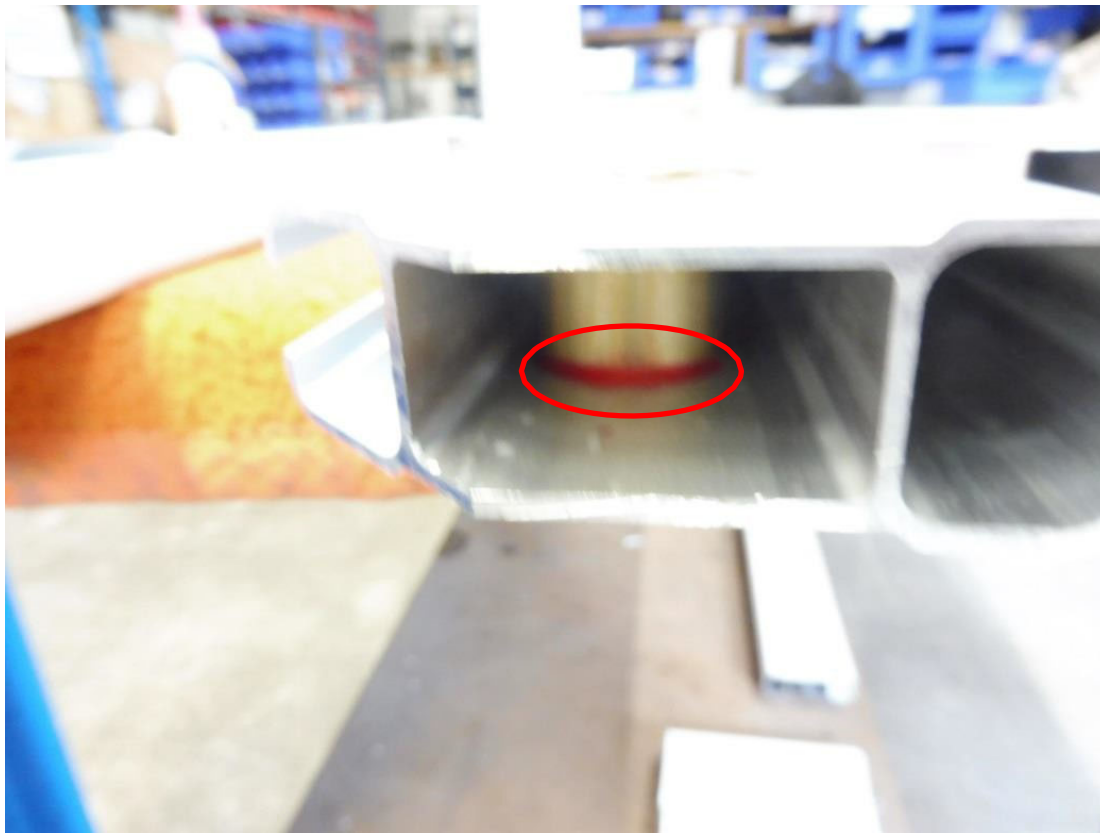
Deburr the hole.

Place the boom on a cloth and tap the brass bushing into the hole with the mallet. Use red thread lock!





Put the red thread lock on the brass socket inside the boom.



Use some soap on the rubber profile and slide it into the boom.

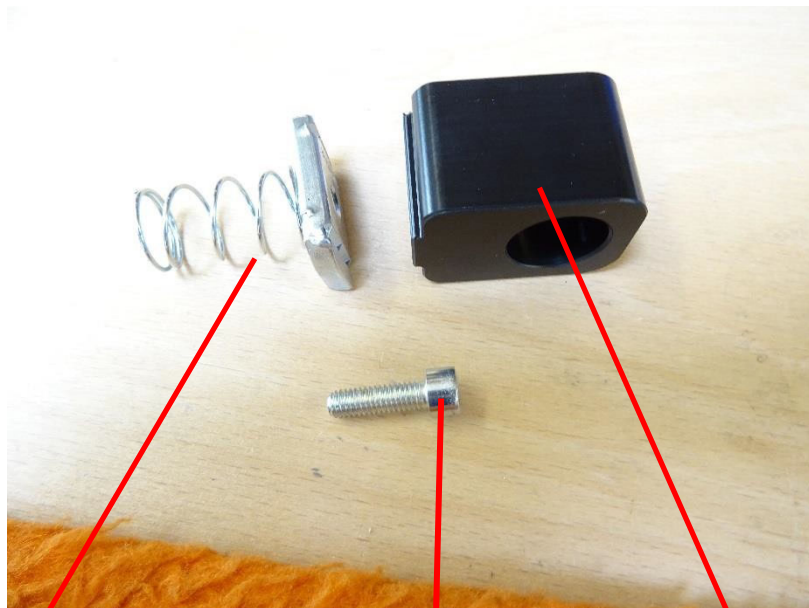


(Only from 3m total length!!!)

Install a rod guide on the hinged beam. Position this in the middle of the length of the beam and screw it tight. Divide the rubber profile by 2 with a measure for the guidance of 48mm.



Structure of the rod guide for articulated beams



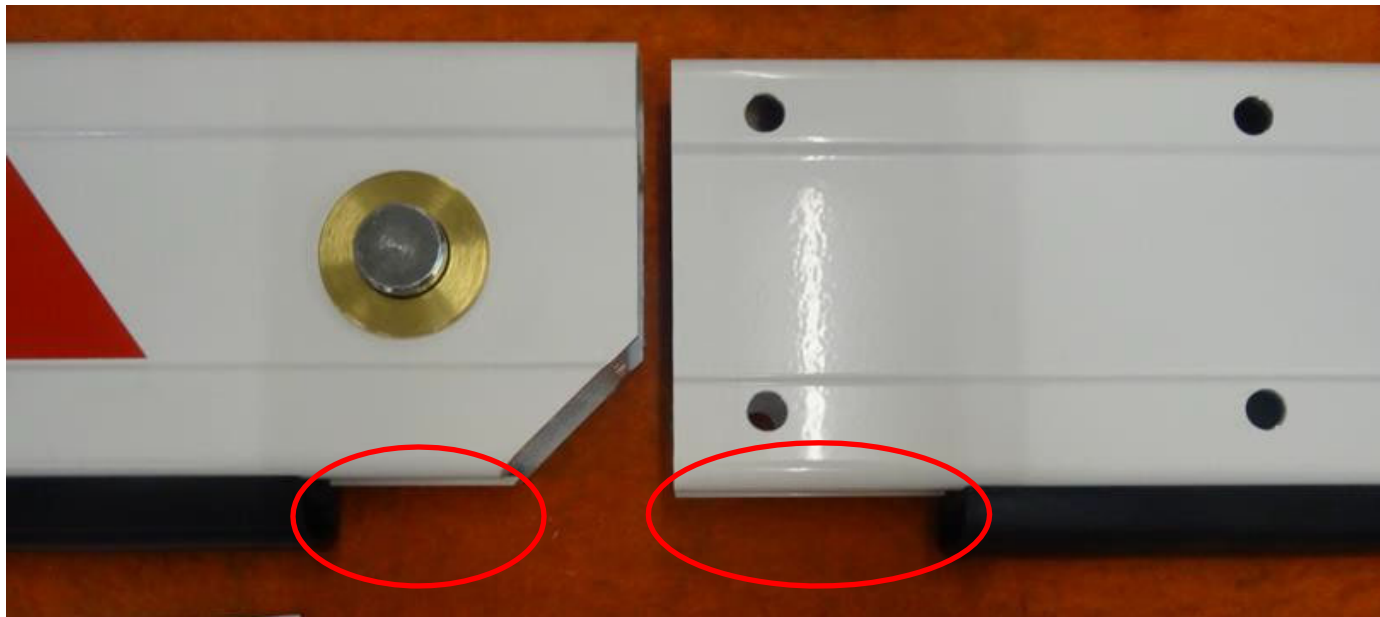
Feather

Screw
I-6kant M6x20

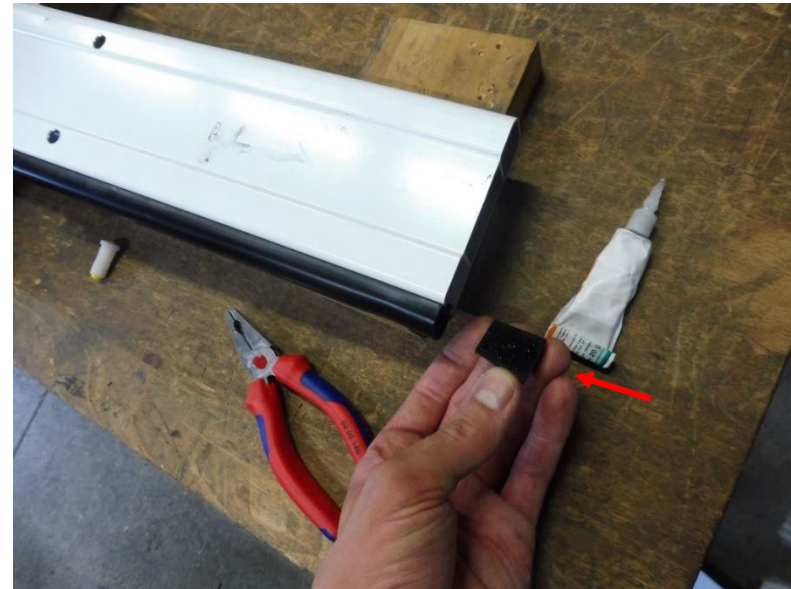
Rod guide



Leave the rubber profile shorter on the 45 degree side and on the screw side for bending movement



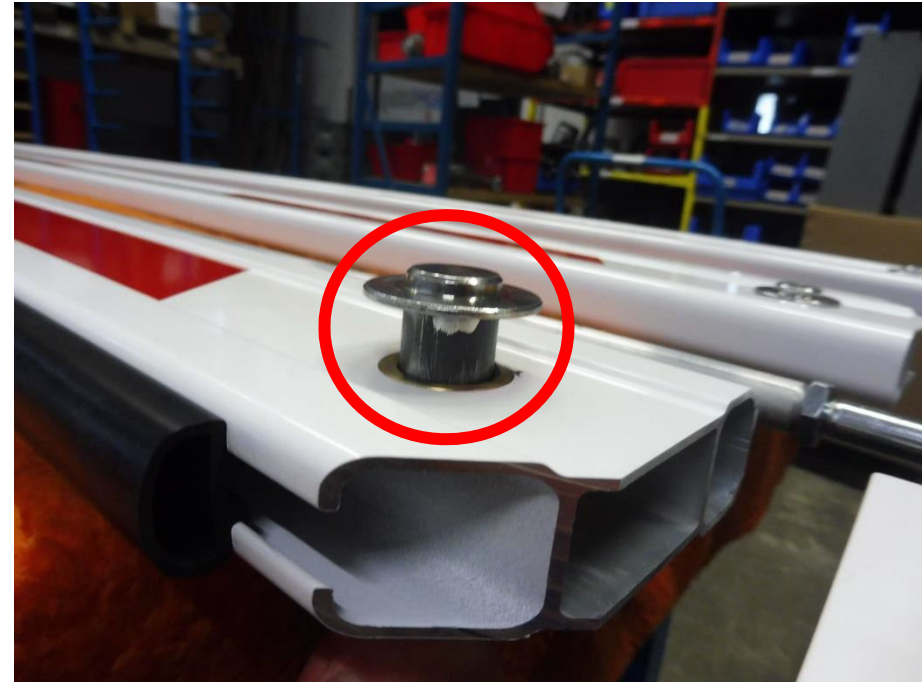
Halve the rubber stubble and glue it to the front edge of the rubber profile with the gel super glue



Fold long and short bars together, clean with brake cleaner.
Do not stick a sticker on the fitting.
If possible, place a sticker over the holes.
The distance between the stickers is the length of one sticker.



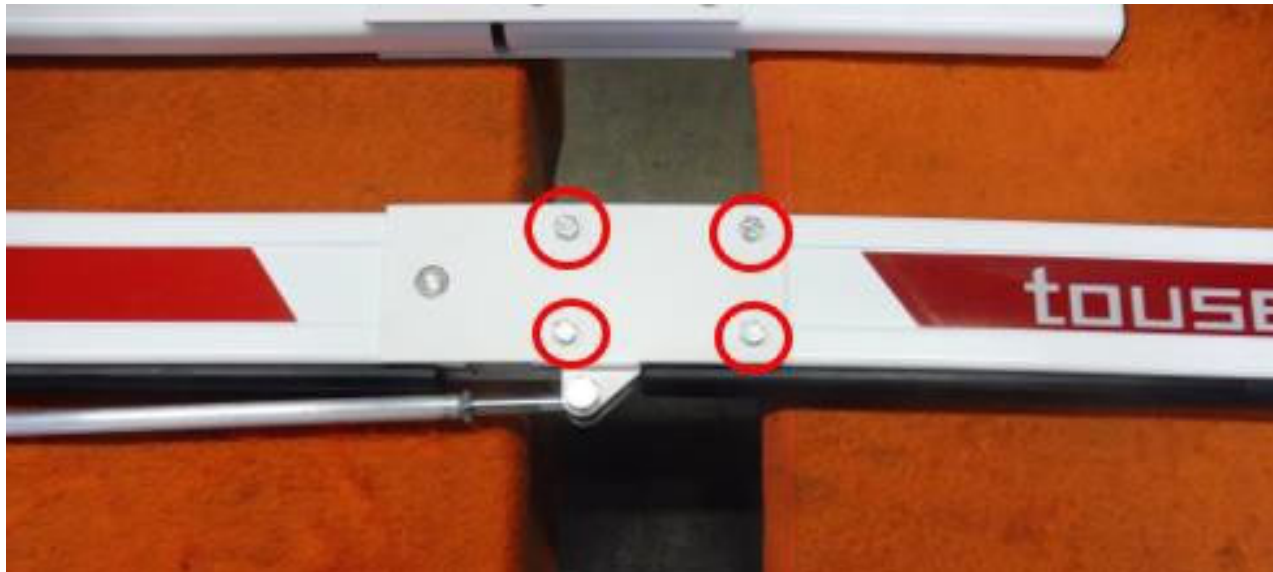
Attach the end cap
Spray the bolt with HSW 100 and insert it into the brass bushing



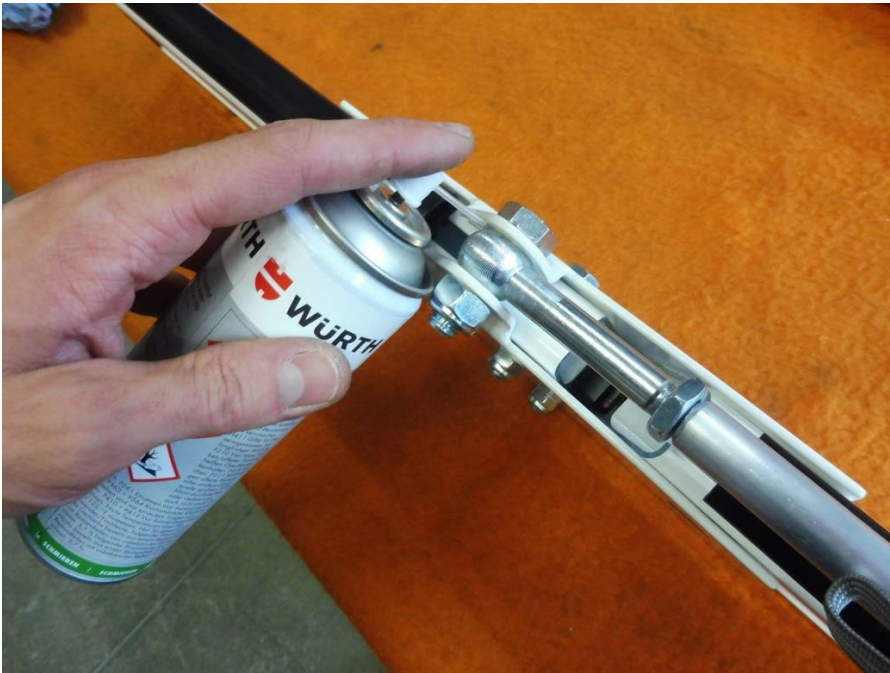
Cut the tube for the hinged beam fitting according to the order
Drill open on both sides with a 10.5 mm drill and cut an M12 thread. At least 50 mm deep!
Fit 2 eye bolts with 2x hexagon half nuts M12 and screw them into the pipe



Tighten the fitting with 4x hexagon head screws M8x45 and 4x lock nuts M8



Provide the eyebolt with 1x hexagon screw M12x35 and 1x lock nut M12
Spray the eye bolt with HSW 100



Prepare the beam for transport

Mark holes on the barrier for recording, drill with 6.2mm

Screw on the holder with 4x M6x20 cylinder screws, 4x M6 locking nuts and bolts for the hinged beam

Fit a retaining ring 12 inox

Use template

