

# EAGLE 5+/6+

## OPENING SENSOR FOR AUTOMATIC DOORS

Commercial sheet



### THE REFERENCE ON YOUR AUTOMATIC DOOR

#### DESCRIPTION

Thanks to the BEA planar antenna, the **EAGLE 5+/6+** offers you a stable and reliable radar detection field in front of the door. It is the perfect activation solution for all type of automatic doors.

#### 2 VERSIONS:

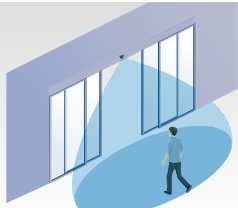
- EAGLE 5+=UNIDIRECTIONAL
- EAGLE 6+=BIDIRECTIONAL

#### FEATURES

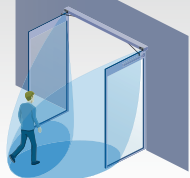
- Improvement of the energy efficiency of buildings thanks to the unidirectional radar, which detects approaching movements and filters out movements moving away: the door closes earlier and reduces heat loss.
- Appealing design for swing doors thanks to positioning the sensor above the pivot.
- Possibility to mount the sensor in the ground.
- High level of stability and reliability of the detection area thanks to the planar antenna developed by BEA.



EAGLE 5+/6+ ■



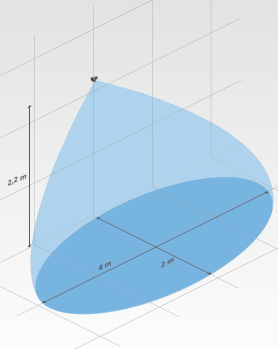
Sliding doors



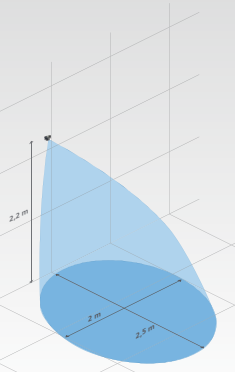
Double swing doors



Revolving doors



Radar area (wide) 4 m x 2 m @ 2,2 m



Radar area (narrow) 2 m x 2,5 m @ 2,2 m

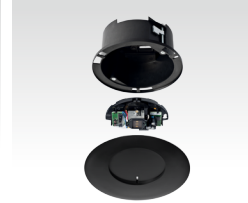
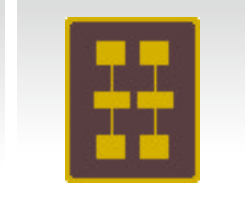
## APPLICATIONS

- Activation of linear, telescopic, curved sliding, swing, revolving and folding doors, etc.

## EASE OF INSTALLATION

- Adjustment setting via DIP switch and potentiometer.

## ACCESSORIES

ORA  
Rain accessoryEBA  
Bracket accessoryECA  
Accessory in ceiling

6 element antenna

## TECHNICAL SPECIFICATIONS

|                                   |  |
|-----------------------------------|--|
| <b>Technology</b>                 | Microwave doppler radar                              |
| <b>Transmitter frequency</b>      | 24.150 GHz   |
| <b>Transmitter radiated power</b> | < 20 dBm EIRP  |
| <b>Transmitter power density</b>  | < 5 mW / cm <sup>2</sup>                             |
| <b>Detection mode</b>             | Motion   |
| <b>Min. detection speed</b>       | 5 cm/s (measured in optimal conditions)              |
| <b>Supply voltage</b>             | 12V to 24V AC +/- 10 %<br>12V to 24V DC + 30% / -10% |
| <b>Mains frequency</b>            | 50 to 60 Hz  |
| <b>Max. power consumption</b>     | < 2 W (VA)   |
| <b>Output</b>                     | Relay (free of potential change-over contact)        |
| Max. contact voltage              | 42V AC / DC  |
| Max. contact current              | 1A (resistive)                                       |
| Max. switching power              | 30 W (DC) / 60 VA (AC)                               |
| <b>Mounting height</b>            | From 1.8 m to 4 m                                    |
| <b>Protection degree</b>          | IP54   |
| <b>Temperature range</b>          | From -20°C to +55°C                                  |
| <b>Dimensions</b>                 | 120 mm (W) x 80 mm (H) x 50 mm (D)                   |
| <b>Tilt angles</b>                | From 0° to 90° vertical; from -30° to 30° lateral    |
| <b>Material</b>                   | ABS  |
| <b>Weight</b>                     | 215 g  |
| <b>Cable length</b>               | 2.5 m  |
| <b>Norm conformity</b>            | R&TTE 1999/5/EC<br>EMC 2004/108/EC                   |

Specifications are subject to change without prior notice.

**DISCLAIMER** This document as well as all other enclosed documents (quotation / specification / other) are provided «as is» without warranties of any kind, either expressed or implied, including but not limited to the implied warranties of merchantability, fitness for a particular purpose, or non-infringement. / Information is supplied upon the condition that the persons receiving it will make their own determination as to its suitability for their purposes prior to use. In no event will BEA be responsible for damages of any nature whatsoever resulting from the use of or reliance upon information from this document or the products to which the information refers. / BEA has the right without liability to change descriptions and specifications at any time. / Prices, shipping and availability are subject to change without prior notice.

