

STEP 1 - ENTER PROGRAMMING MODE

ORIGINAL, 'MASTER'
(already paired to the working gate motor)

ADDITIONAL REMOTE
(not currently paired to the gate motor)



1. PRESS and HOLD buttons **1 & 2** simultaneously until the LED light on the remote begins to flash repeatedly on/off

2. RELEASE both buttons
NOTE: The LED light will remain flashing on/off

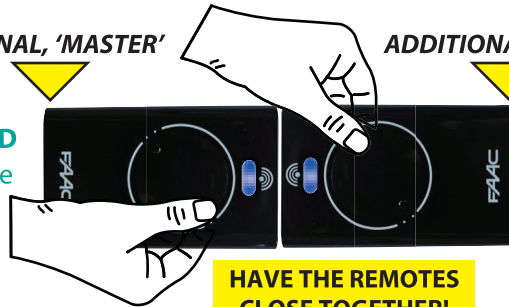
You are now in programming mode

STEP 2 - TRANSFER THE CODE

ORIGINAL, 'MASTER'

ADDITIONAL REMOTE

3. Within 5 seconds of entering the programming mode, PRESS and HOLD any trigger button to transfer the code
NOTE: The flashing LED light on the remote will remain on for the duration the button is held down



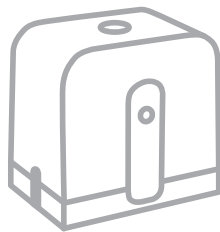
HAVE THE REMOTES CLOSE TOGETHER!

4. Then PRESS and HOLD the chosen button and observe 3 flashes of the LED light
NOTE: 3 flashes confirms cloning

STEP 3 - TESTING THE REMOTE

COMPATIBLE FAAC GATE MOTOR

ADDITIONAL REMOTE



5. PRESS and RELEASE the Trigger button until the gate moves, this may take a number of presses
NOTE: If the gate fails to activate, repeat the cloning process again

REMOTE TO BE NO CLOSER THAN 1M



INSTRUCTION VIDEO

SUCCESS!

YOUR NEW REMOTE WILL NOW PERFORM AS YOUR ORIGINAL REMOTE DOES

NOTE: Multiple additional remotes can be continuously cloned whilst the 'Master' trigger button is being held down